

D Series Touch Panel



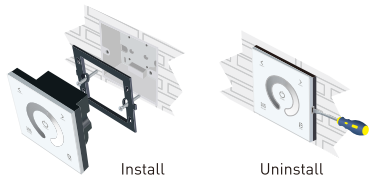
D1

warranty
5 years

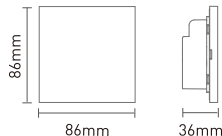
1. Technical Specs:

- Input Voltage: 12-24V DC
- Load Current: 4A×3CH Max 12A
- Dimming Range: 5%-100%
- Max Output Power: 144W/288W(12V/24V)
- Working Temp.: -30°C~55°C
- Dimensions: L86×W86×H36(mm)
- Package Size: L113×W112×H50(mm)
- Weight(G.W.): 208g

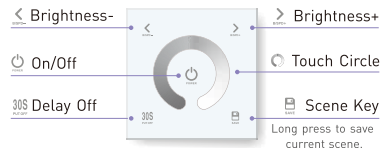
2. Installation Instruction:



3. Product Size:

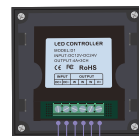


4. Key Functions:



* Long press to turn on/off the tone.

5. Green Block:

Power Input
SocketLED lamp
Connected Socket

6. Wiring Diagram:

E.g 1: Connect with 12V Strip. Max 48W/CH[12V]



E.g 2: Connect with 24V Strip. Max 96W/CH[24V]

